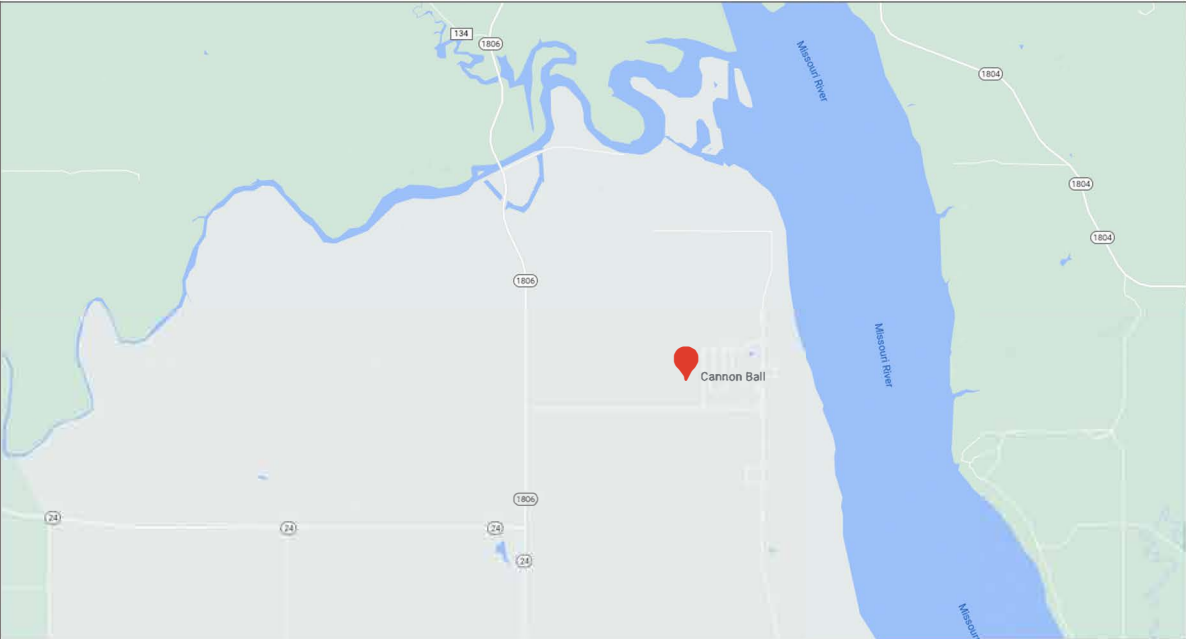
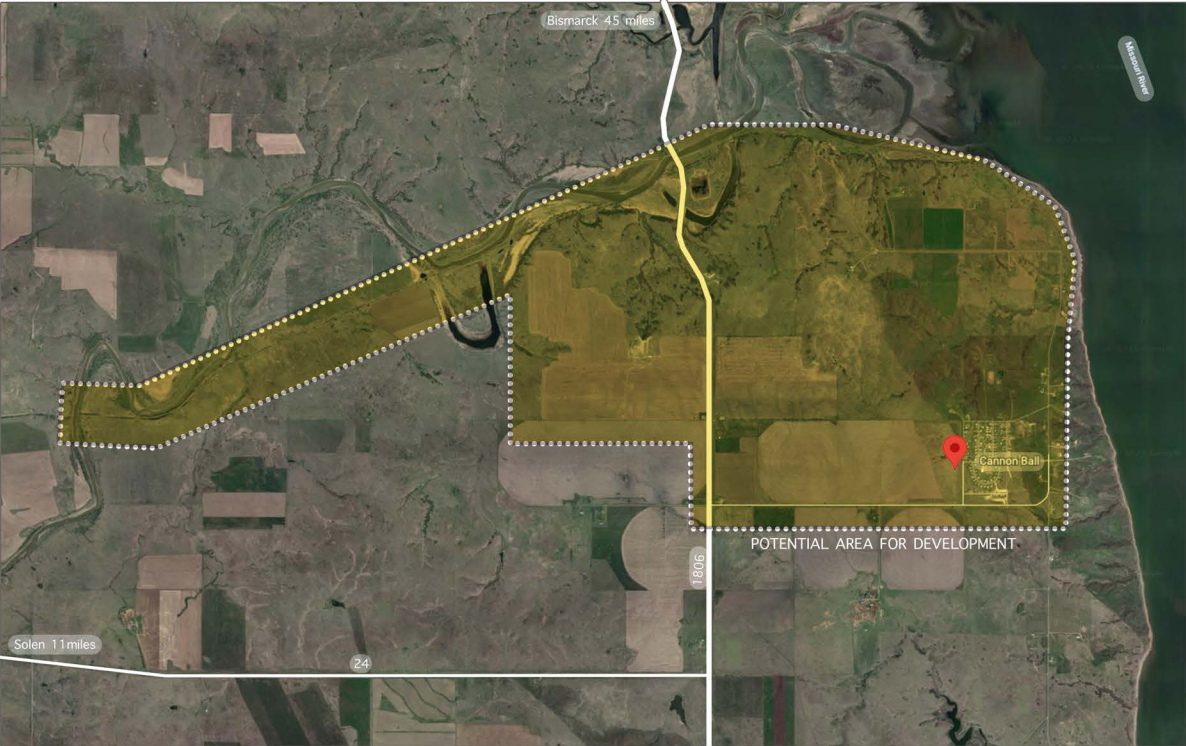
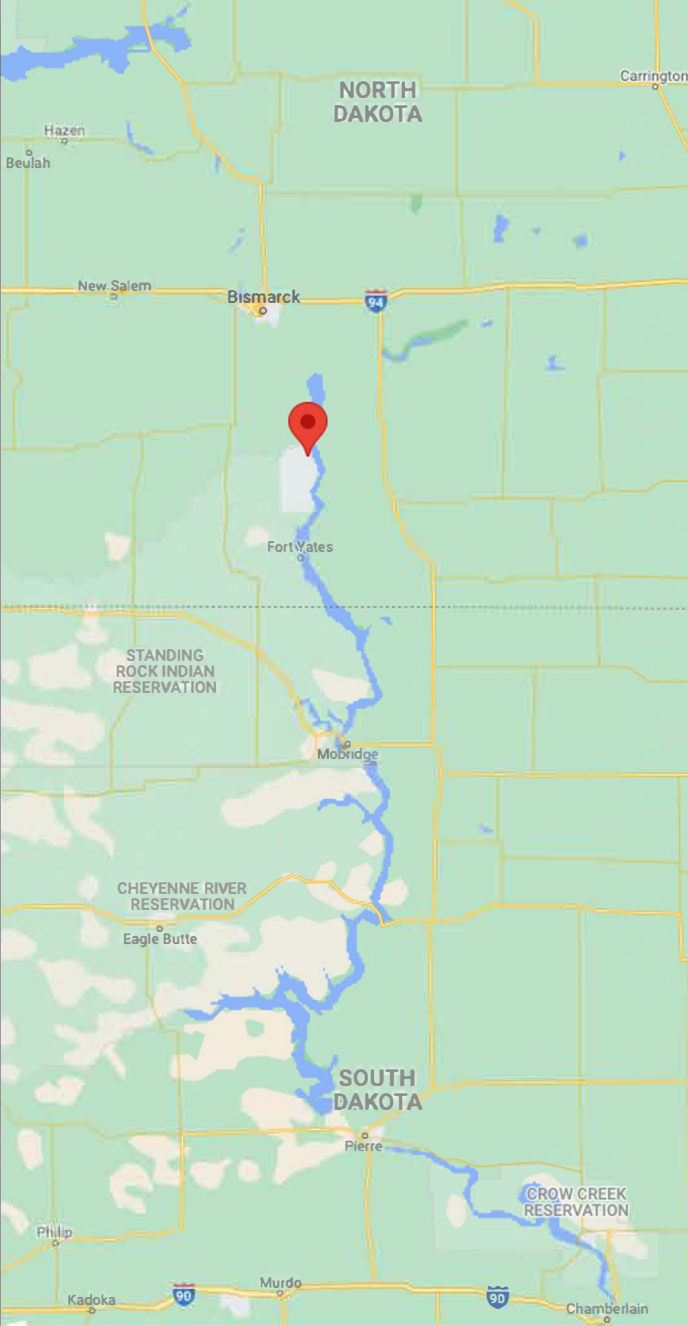




CANNON BALL BIKE TRAILS

CANNON BALL, NORTH DAKOTA

CANNON BALL LOCATION





PHASE 1 - PUMP TRACK

DAKOTA PIPELINE VIEWPOINT/STORY

ORIGINAL LOCATION OF THE MANDAN VILLAGE

Possible opportunity to build a connecting track here

ROAD CROSSING & RIVER BRIDGE

OLD RAILROAD BED STARTS

Washed out areas need culverts and heavy rock drainage

WICKS PROPERTY

OVERNIGHT RV SITE

Other Trail Access

4.5 mile Heritage Railway Line Trail

Buffalo Fencing around Farmland

BIKE PARK CONCEPT (LAST PRIORITY)

Access off the main road

INDIGENIZED FARM LAND & REGENERATIVE FARMING CENTRE INFO & EXPERIENCE

BMX TRACK LOCATION

PUMP TRACK LOCATION (PRIORITY 1)

Indigenized Energy Solar Farm

Road Crossing Point

Cannon Ball

Indigenized Energy Solar Farm

St. James' Church

SOLEN 11 miles
24

Google 100%

24

800 m Camera: 9,493 m 46°23'43"N 100°38'48"W 524 m

MISSOURI RIVER

Oceti Se rowin

1806

P

P

P

1806

1806

P

3D







PHASE 2 - WEST TRAIN TRACK & BMX TRACK

Possible opportunity to build a connecting track here

Washed out areas need culverts and heavy rock drainage

ROAD CROSSING & RIVER BRIDGE

Oceti Se rowin

1806

DAKOTA PIPELINE VIEWPOINT/STORY

ORIGINAL LOCATION OF THE MANDAN VILLAGE

OLD RAILROAD BED STARTS

WICKS PROPERTY

Other Trail Access

OVERNIGHT RV SITE

Buffalo Fencing around Farmland

Access off the main road

BIKE PARK CONCEPT (LAST PRIORITY)

Existing Twin Buttes storyboard

4.5mile Heritage Railway Line Trail

INDIGENIZED FARM LAND & REGENERATIVE FARMING CENTRE INFO & EXPERIENCE

1806

PUMP TRACK LOCATION (PRIORITY 1)

BMX TRACK LOCATION

Indigenized Energy Solar Farm

Road Crossing Point

Cannon Ball

MISSOURI RIVER

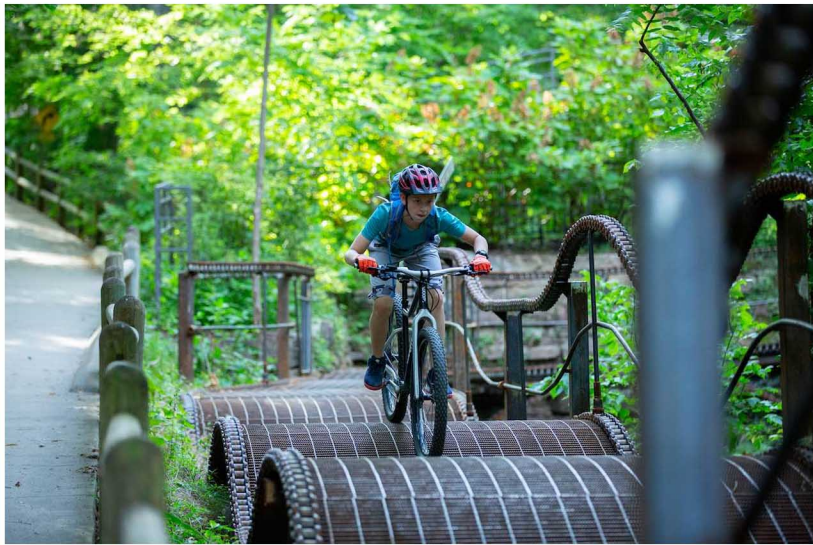
SOLEN 11 miles

24

24

1806

St. James' Church



PHASE 3 - TRAIL ALONG HIGHWAY 1806

DAKOTA PIPELINE VIEWPOINT/STORY

ORIGINAL LOCATION OF THE MANDAN VILLAGE

Possible opportunity to build a connecting track here

ROAD CROSSING & RIVER BRIDGE

OLD RAILROAD BED STARTS

Washed out areas need culverts and heavy rock drainage

WICKS PROPERTY

OVERNIGHT RV SITE

Other Trail Access

4.5 mile Heritage Railway Line Trail

Buffalo Fencing around Farmland

BIKE PARK CONCEPT (LAST PRIORITY)

Access off the main road

INDIGENIZED FARM LAND & REGENERATIVE FARMING CENTRE INFO & EXPERIENCE

Existing Twin Buttes storyboard

PUMP TRACK LOCATION (PRIORITY 1)

BMX TRACK LOCATION

Road Crossing Point

Indigenized Energy Solar Farm

Cannon Ball

MISSOURI RIVER

SOLEN 11 miles
24

St. James' Church



PHASE 4 - NORTH CANNON BALL

DAKOTA PIPELINE VIEWPOINT/STORY

ORIGINAL LOCATION OF THE MANDAN VILLAGE

Possible opportunity to build a connecting track here

ROAD CROSSING & RIVER BRIDGE

Washed out areas need culverts and heavy rock drainage

OLD RAILROAD BED STARTS

WICKS PROPERTY

Other Trail Access

OVERNIGHT RV SITE

Buffalo Fencing around Farmland

BIKE PARK CONCEPT (LAST PRIORITY)

Access off the main road

Existing Twin Buttes storyboard

4.5 mile Heritage Railway Line Trail

INDIGENIZED FARM LAND & REGENERATIVE FARMING CENTRE INFO & EXPERIENCE

BMX TRACK LOCATION

PUMP TRACK LOCATION (PRIORITY 1)

Indigenized Energy Solar Farm

Road Crossing Point

Cannon Ball

Indigenized Energy Solar Farm

St. James' Church

SOLEN 11 miles
24

Google 100%

24

800 m Camera: 9,493 m 46°23'43"N 100°38'48"W 524 m

MISSOURI RIVER

Oceti Se rowin

1806

1806

1806

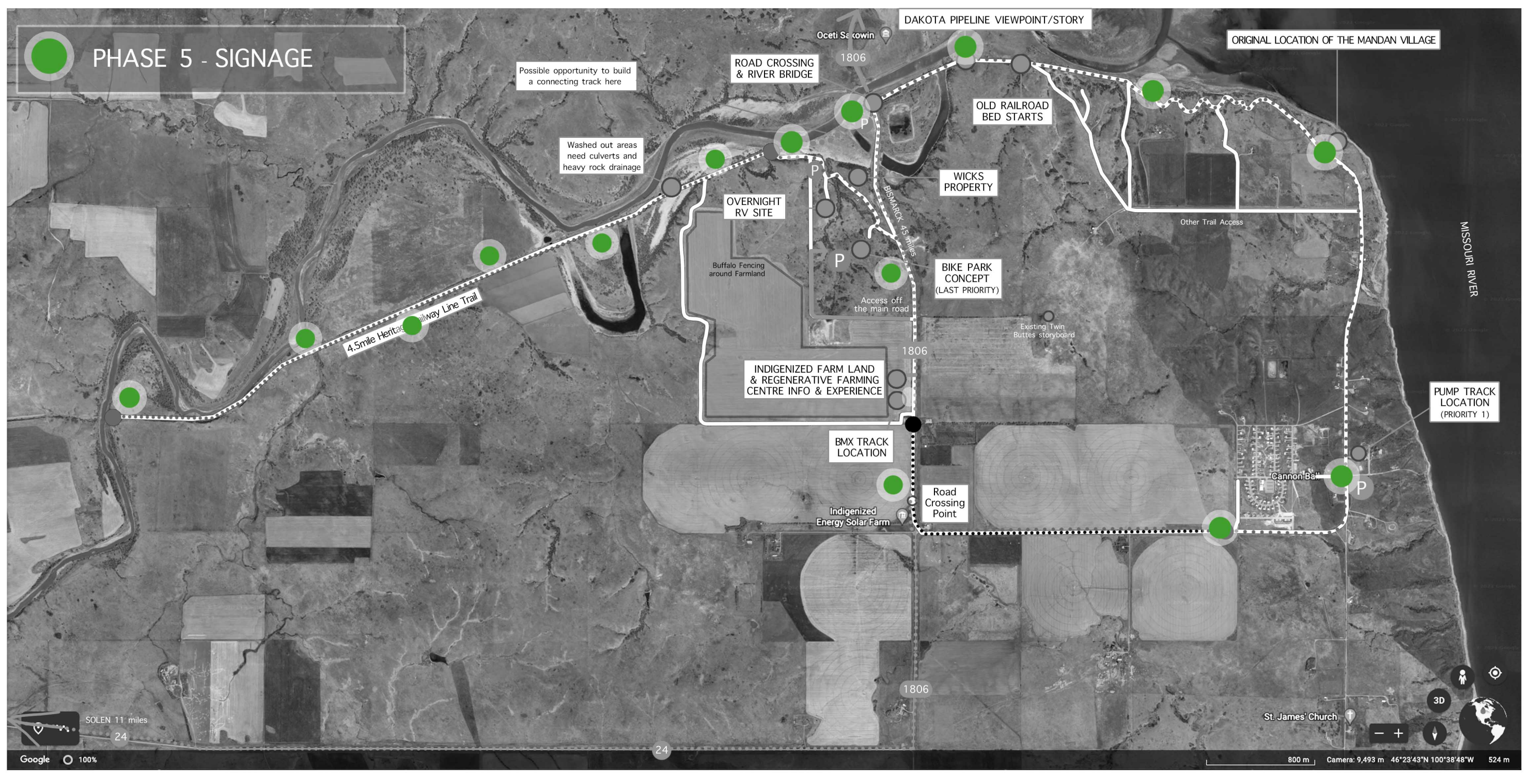
BISMARCK 4.5 miles

3D





PHASE 5 - SIGNAGE



DAKOTA PIPELINE VIEWPOINT/STORY

ORIGINAL LOCATION OF THE MANDAN VILLAGE

Possible opportunity to build a connecting track here

ROAD CROSSING & RIVER BRIDGE

OLD RAILROAD BED STARTS

Washed out areas need culverts and heavy rock drainage

WICKS PROPERTY

OVERNIGHT RV SITE

Other Trail Access

Buffalo Fencing around Farmland

BIKE PARK CONCEPT (LAST PRIORITY)

4.5 mile Heritage Railway Line Trail

Access off the main road

Existing Twin Buttes storyboard

INDIGENIZED FARM LAND & REGENERATIVE FARMING CENTRE INFO & EXPERIENCE

PUMP TRACK LOCATION (PRIORITY 1)

BMX TRACK LOCATION

Cannon Ball

Indigenized Energy Solar Farm

Road Crossing Point

1806

St. James' Church

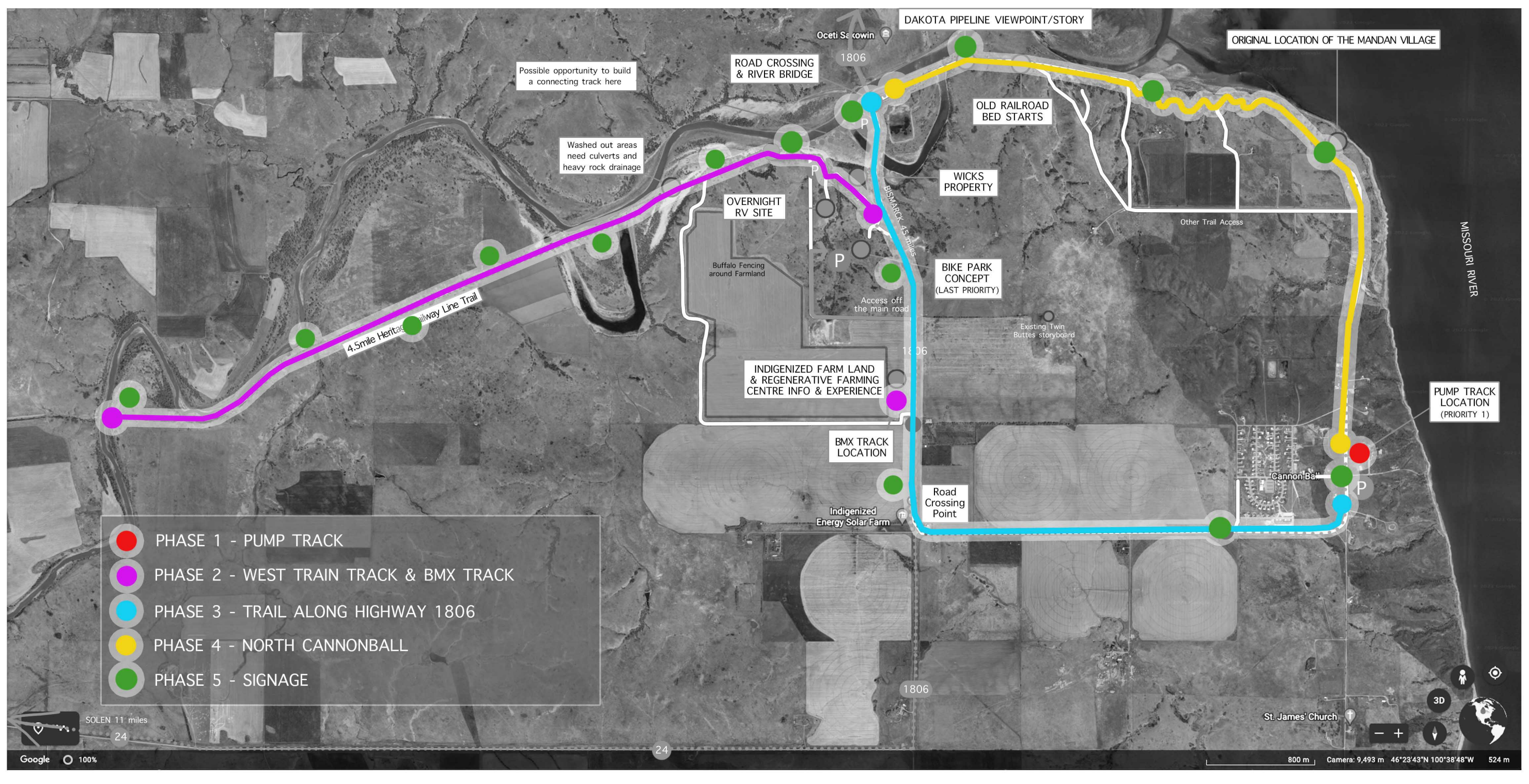
SOLEN 11 miles
24

Google 100%

24

800 m Camera: 9,493 m 46°23'43"N 100°38'48"W 524 m





DAKOTA PIPELINE VIEWPOINT/STORY

ORIGINAL LOCATION OF THE MANDAN VILLAGE

Possible opportunity to build a connecting track here

ROAD CROSSING & RIVER BRIDGE

OLD RAILROAD BED STARTS

Washed out areas need culverts and heavy rock drainage

WICKS PROPERTY

OVERNIGHT RV SITE

BIKE PARK CONCEPT (LAST PRIORITY)

4.5 mile Heritage Millway Line Trail

Buffalo Fencing around Farmland

INDIGENIZED FARM LAND & REGENERATIVE FARMING CENTRE INFO & EXPERIENCE

BMX TRACK LOCATION

Road Crossing Point

Indigenized Energy Solar Farm

PUMP TRACK LOCATION (PRIORITY 1)

MISSOURI RIVER

Cannonball

St. James' Church

- PHASE 1 - PUMP TRACK
- PHASE 2 - WEST TRAIN TRACK & BMX TRACK
- PHASE 3 - TRAIL ALONG HIGHWAY 1806
- PHASE 4 - NORTH CANNONBALL
- PHASE 5 - SIGNAGE

SOLEN 11 miles

24

24

Google 100%

800 m Camera: 9,493 m 46°23'43"N 100°38'48"W 524 m

Cannon Ball Trail Infrastructure Shared Stories

Story #	Story Title	Brief Outline	Proposed Storyboard Location	Contacts/Expert	Contact info
1	Example	Example was in place for 1400 years and showcases xxxxxxxxxxxx etc.	1.2 mi from first intersection	Steven	xxxxxx-xxxx
2					
3					
4					
5					
6					
7					
8					
9					
10					
11					
12					
13					
14					
15					
16					
17					
18					
19					
20					
21					
22					
23					
24					
25					



THANKYOU